

christmasworld

trends
2014

modern fairytales

Charm settles gently over everything. Soft snow shimmers like mother-of-pearl and candles cast a golden glow from homes with seasonal decorations on display. In the coldest season, doors open onto fairytales, hopes and dreams. These are days with a magical quality. What we have valued for generations is still sparking interest and influencing design at all levels.

modern fairytales

The **Christmasworld Trends 26+** take us for a familiar walk through a storybook world. The light sways as it falls softly through the treetops, with dark colours promising to tell secrets along the way. The scene captures our hearts in seconds. We live in a fast-paced world where the future began long ago, partly in our roots and partly in a vision for the future. These designs have deep backgrounds, and are made to be interpreted in multiple different ways. They're always a good influence, and what they tell us about shape, colour and surface leaves us feeling optimistic. Iconic objects blaze new trails. Even graphic patterns tell sophisticated stories and add to the wonder of this special time. Quality, circular materials and quotations from the future combine in a stimulating, lively and attractive mix.

brave

What moves you? Unexpected inspiration, beautiful stories, or figurative subjects with reassuring echoes of the past? A variety of things can gently usher in our favourite festive period. The art of living involves going with the flow and embracing this joy – plus the broader meaning behind it. Feeling the attraction and benefiting from it are more closely connected than you'd think.

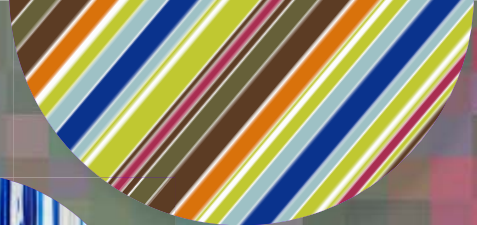
Unique, special designs are like soloists that can be incorporated into a balanced orchestration. Each and every quality has equal value, and all objects have space to tell their own inspirational story. In particular, a collaboration between seemingly contradictory shapes and patterns, between techniques and worlds of texture, showcase what's attractive about brave – the fact courageous exchange can create a fresh coexistence. On a higher level, this makes for the beginnings of positive change. Stories hold the power to activate distant memories. We dearly wish to bring the past back to life using patterns and figurative motifs. Digital technologies working with crafts produce unconventional, artistic results. The emotional impact comes both from a fond retro aesthetic and from experimentation.

brave

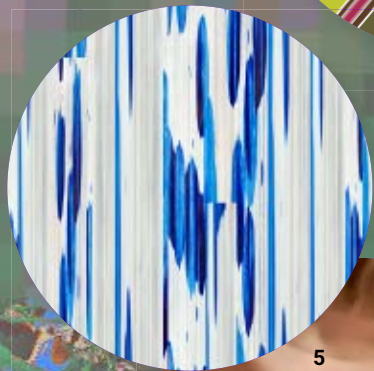


1

retro charm



2



3

expressive

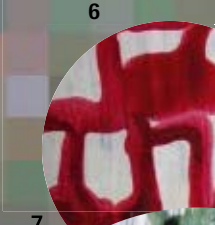


5

diverse



4



6



7



8

exceptional



9



10



12

skilful

imaginative



11

1 Bow Chair by Worn Studio 2 Retro-inspired stripes 3 Hand painted, digitally edited patterns 4 Textured surfaces 5 Copper 6+7 Experimental, coloured glazes 8 Nut Family Urushi Edition by Kai Linke, Photo: Ingmar Kurth 9 Botanical Candle, Green Hellebore by Lola Lely + Yesenia Thibault-Picazo for WAX Atelier 10 Graphic pixel motifs 11 Kaktus, la boule de Noël 2024 by Mark Braun for CIAV Meisenthal 12 Christmas bauble by Worn Studio

brave

Spirited, bold and lively is a mixture that fits and allows designs to express themselves. All shades of copper play a major role and bridge the divide between strong colours that create eye-opening narratives. Red and violet come together with gentler shades in creative tension.

Pantone 640 C
Pantone 18-4535 TCX

Pantone 2263 C
Pantone 17-0220 TCX

Pantone 138 C
Pantone 16-1150 TCX

Pantone 7660 C
Pantone 16-3810 TCX

Pantone 7751 C
Pantone 15-0643 TCX

Pantone 675 C
Pantone 18-2328 TCX

Pantone 447 C
Pantone 19-1220 TCX

Pantone 7599 C
Pantone 18-1355 TCX

Pantone 668 C
Pantone 18-3620 TCX

Kupfer
Copper

light

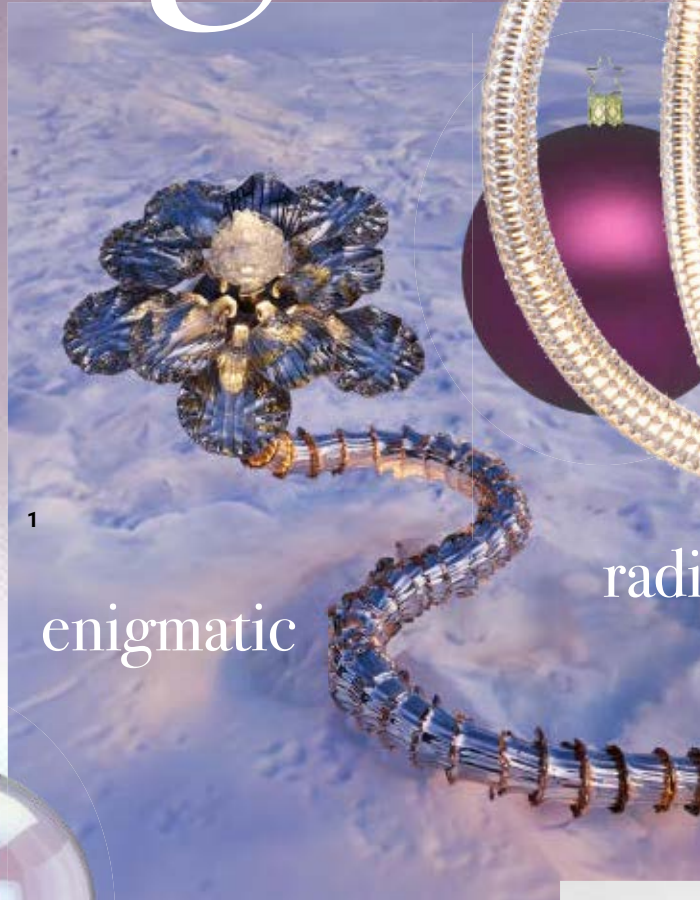
Intuition is the most important impulse of all. We use it to shape a light-flooded home that's cosy and warm. When nature is outdoors, sleepily making fascinating winter still-lives, difficulties seem less of a burden and can be converted to festive joy. Indoor areas open up to fond memories and shimmering hopes for the future. There's no more magical time of the year.

light is essentially a glimpse behind the magic mirror: ethereal, poetic and aware that optimism can be the key to it all. Both objects and design have such force that they seem both surreal and puzzling. Soft light filters through, making it look like an illusion. Designers create an unmistakable aura of transparent weightlessness and organic movement. They stage this balance effectively, often by multisensory means. Meanwhile, an artisanal heritage achieved using digital technology contributes emotional depth with various meanings. Creatives' subtle play with perception gains a healthy strength from this depth. By selecting and working with environmentally friendly materials, they attest to the circular future of objects: our possessions will eventually flow back into the circular economy.

light

translucent

christmasworld trends 26+



1

enigmatic



3

2

radiant



5

7



6



8

ethereal



9



10

sensual



12

visionary



11

1 Frosted Mirror Syriacus by Christian Pellizzari for Nilufar at NOMAD St. Moritz 2025, Photo: Filippo Pincolini **2,3,4** Christmas baubles by Inge Glas Manufaktur, Photo: Rudi Gick GmbH, Michelau **5** Luminora Light by Cristina Celestino for Moooi **6** Frosted effects, icy transparency **7** Odd Candle Holder by Normann Copenhagen **8** Relief and reflective surfaces **9** Christmas Paper Tassels by Amanda Betz for FERM LIVING **10** Glas Ornament with Platinum decoration by Alfagr, Photo: Omar Moshrif **11** Liquid effects, flowing structures **12** Liquid Vase by Dorian Renard, Photo: Dorian Renard

light

Air, light and a gentle whisper: the colour palette is free, ethereal and radiant. Matte silver evokes moonlight, misty pastel moods come together charismatically. Dark colours inspired by natural earth emerge powerfully, quietly and protectively.

Pantone 7541 C
Pantone 11-4601 TCX

Pantone 5523 C
Pantone 13-5306 TCX

Pantone 2205 C
Pantone 15-4005 TCX

Pantone 523 C
Pantone 14-3612 TCX

Pantone Cool Gray 3 C
Pantone 14-4201 TCX

Pantone 4009 C
Pantone 15-1237 TCX

Pantone 490 C
Pantone 19-1525 TCX

Pantone 7449 C
Pantone 19-1718 TCX

Pantone 2215 C
Pantone 19-4324 TCX

Silber
Silver

solid

Minimalism and poetry make surprisingly good bedfellows. Along their way, both win us over with their strong, sustained aesthetic. They signpost what counts in transitory times: space for essential creativity, to grasp the deeper meaning. Designers draw respectfully from the archives and consciously write the next page of the story.

The future comes from our memories: design classics awaken, refreshed, while quotations from the past work well in reimagined designs and materials. Everything's intended to last a long time, with predominantly geometric shapes and patterns. solid tells tales of trust and stability, enriched by the design approach of strict but subtle order. Futuristic, mirrored surfaces are flattering, while stylised geometry completes the handy modular solutions. It's clear what is essential. The process of paring down introduces emotion and opens up a modern, poetic approach. Even just a little is sufficient to let the inner glow shine through. Exemplary product design plays a key role: the focus all round is on durability and minimising any burden on the environment.

solid

precise

christmasworld trends 26+



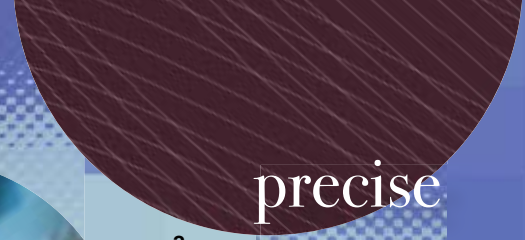
1

unconventional



2

metallic



3



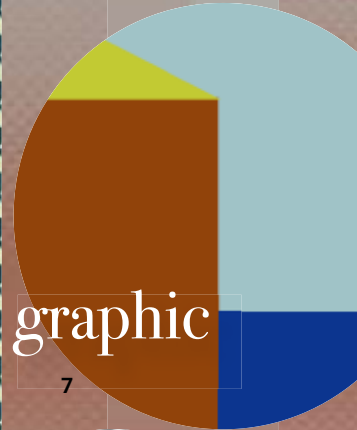
5



4



6



7

graphic

timeless



8

concise



9



10



11

1 Christmas tree by Kay Bojesen Denmark 2 Compact, solid glass 3 Precise, linear patterns 4 Graphic structures and matte, metallic surface finishes 5 Fine wood 6 Triangles by Carta Pura 7 Geometric motifs and surface designs 8 Rustic Candles by Broste Copenhagen, Photo: Mikkel Tjellesen 9 Mirror surfaces and high-shine metal 10 Striking flowers, expressive floristry, Photo: davidf, istock 11 Martini Shot Glass by Traga

solid

Clear, bold and decisive: white is neutral and cool, pure-image colours send their own, essential message. Lively colour intensity alternates with metal components like steel or aluminium. The nature of colours used is seen as unusual and unexpected.

Weiß / White
Pantone 11-4800 TCX

Pantone 2230 C
Pantone 17-4928 TCX

Pantone 7756 C
Pantone 18-0527 TCX

Pantone 7586 C
Pantone 18-1246 TCX

Pantone 2204 C
Pantone 13-4809 TCX

Pantone 7462 C
Pantone 19-4049 TCX

Pantone Black 6 C
Pantone 19-4003 TCX

Pantone 4232 C
Pantone 13-0650 TCX

Pantone 2322 C
Pantone 19-1020 TCX

Edelstahl
Stainless Steel

The Christmasworld Trends 26+ developed by Stilbüro bora.herke.palmisano reliably describe new products, international trends and major potential. They're close to the market, focussed, and act as a valuable guide to buying seasonal products.

modern fairytales

Cem Bora, Claudia Herke and Annetta Palmisano have founded one of Germany's leading trend bureaus. With backgrounds in fashion, design and architecture, these experienced experts home in on cutting-edge product developments, style-defining ideas and circular solutions. They work on behalf of Messe Frankfurt to track them down in the world's creative hotspots, workshops, artists' studios, design collaborations and digital hubs. That's why their analysis, talks and special shows are synonymous with discovering the most influential designs.



Annetta Palmisano



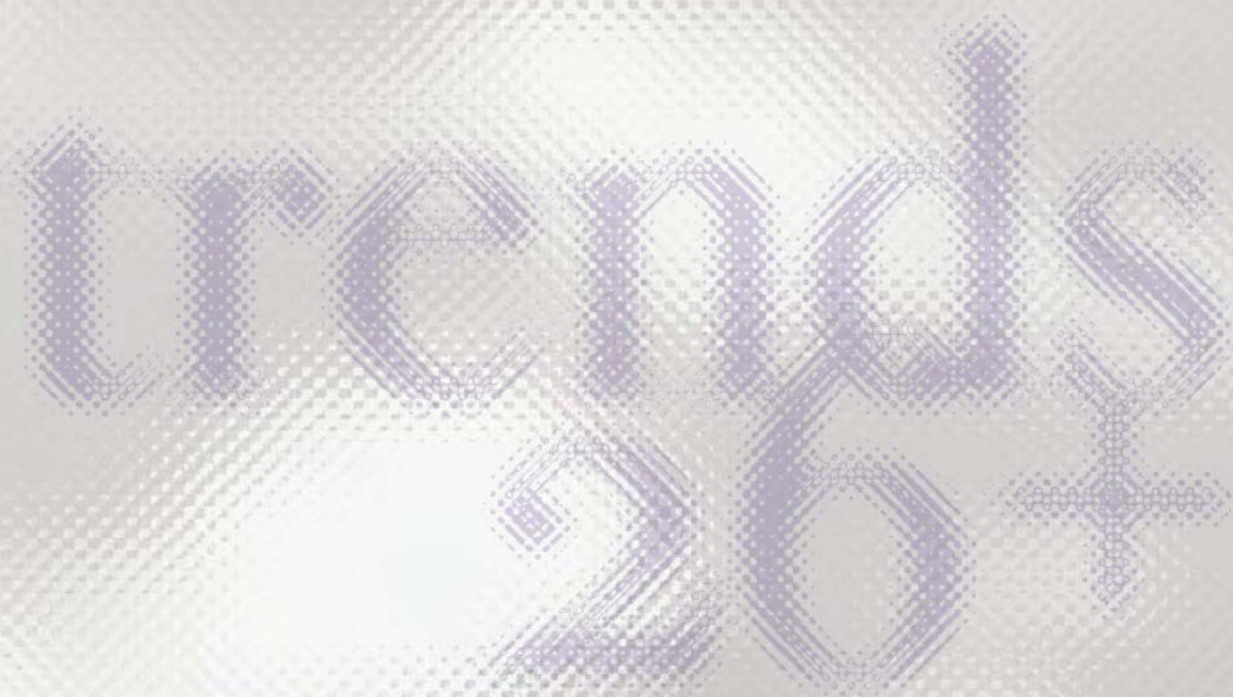
Cem Bora



Claudia Herke

christmasworld

6. – 10. 2. 2026



Christmasworld

Messe Frankfurt Exhibition GmbH
Postfach 15 02 10
60062 Frankfurt am Main
christmasworld.messefrankfurt.com

messe frankfurt